



CONTEMPO

TECHNICAL SPECIFICATION



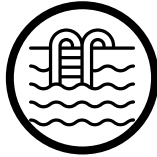
This Range

Beautiful range of porcelain tiles, suitable for interior and exterior applications, in 10mm thickness.

Suitable for:



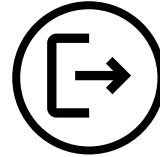
Heavy Footfall



Pool Edging



Stairs



Exterior

Sizes

1200 x 1200 x 10mm rectified
1200 x 600 x 10mm rectified
1200 x 600 x 10mm rectified
600 x 600 x 10mm rectified
600 x 600 x 10mm rectified

Colours



White



Cream



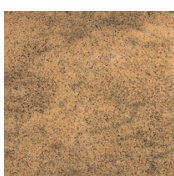
Silver



Rouge



Black



Butterscotch

Technical Details - 8.5mm

Technical Features	Test Method	Required Values	Average Values
Water Absorption	ISO 10545-3	≤ 0,5%	Compliant
Modulus of breaking	ISO 10545-4	≥ 35 N/mm ²	Compliant
Deep Abrasion Resistance	ISO 10545-6	≤ 175 mm ³	Compliant
Linear Thermal Expansion	ISO 10545-8	No provision	$\alpha \leq 7.1 \times 10^{-6} \text{ } ^\circ\text{C}^{-1}$
Stain Resistance	ISO 10545-14	Class 35Min.	Compliant
Chemical Resistance (*)	ISO 10545-13	As indicated by manufacturer	Compliant
Frost Resistance	ISO 10545-12	No alteration	Resistant
Slip Resistance	BS 7976:2002	Declared value	R10 Natural R11 Bush-hammered
Thickness	ISO 10545-2	+/-0.5	Compliant

Recommended minimum joint (**)		RECT (Interior)	2mm (RECT) circa/approx
--------------------------------	--	-----------------	--------------------------------

(*) Excluding hydrofluoric acid and its derivatives. (**) The width of grout joints must be established by the installation supervisor, unless grout widths are regulated by national laying standards.

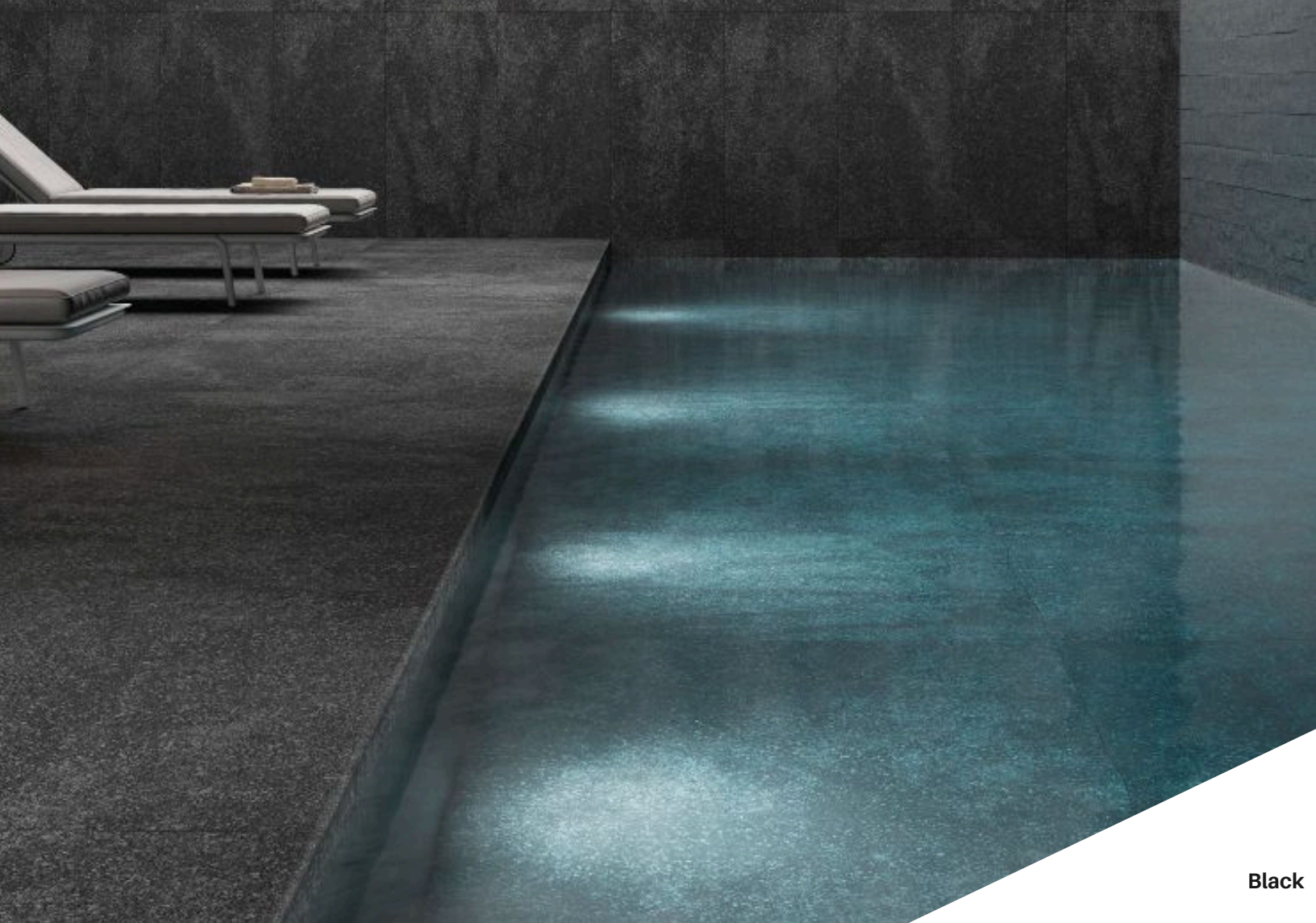
Packing Details

Size	Pz/Box	Mq/Box	Box/Pal	Mq/Pal
1200 x 1200 x 10mm Rectified	2	2.88	14	40.32
1200 x 600 x 10mm Rectified	2	1.44	27	38.88
600 x 600 x 10mm rectified	3	1.08	32	34.56



White
Silver





Black

Butterscotch





Cream

Rouge





204 Duggins Lane, Tile Hill, Coventry,
CV4 9GP
02475 092 859
www.keystoneco.co.uk

