

# MAISON

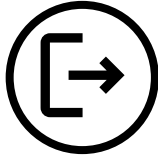
TECHNICAL SPECIFICATION



# This Range

Kuda is a range of porcelain small format glaze look tiles. With it's porcelain properties these are suitable for inside and outside use. In a beautiful array of colours a perfect option for your project.

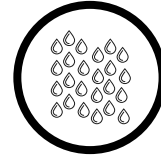
## Suitable for:



Exterior



Interior

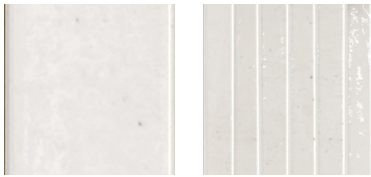


Wet Areas

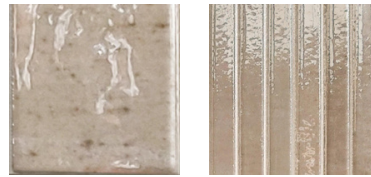
## Sizes

brick 250 x 60 x 9mm  
linear 250 x 125 x 9mm

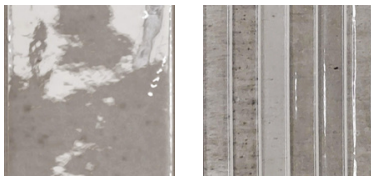
## Colours



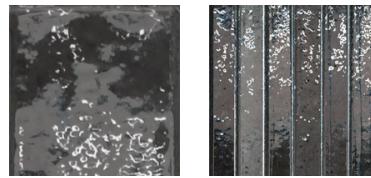
Latte



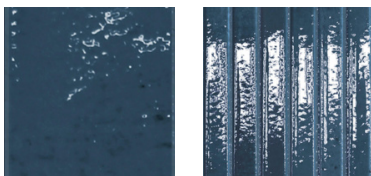
Syrup



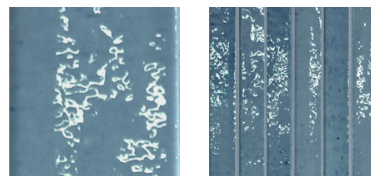
Ash



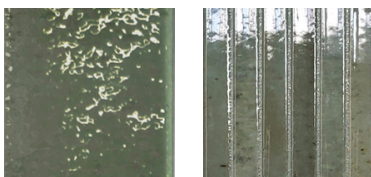
Ember



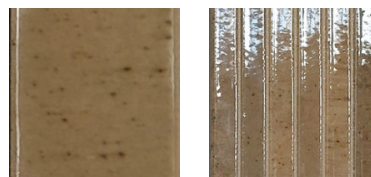
Blue



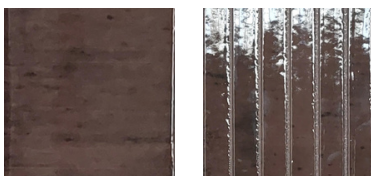
Water



Evergreen



Camel



Wine

# Technical Details

Technical Features	Test Method	Required Values	Maison
Dimensional Features	ISO 10545-2		<b>Conforms</b>
Water Absorption	ISO 10545-3	$\geq 0.5\%$	<b>0,25% &lt; E &lt; 0,45%</b>
Bending Strength	ISO 10545-4	$\geq 35 \text{ N/mm}^2$	<b>MID 35 INDMIN 32</b>
Breaking Strength	ISO 10545-4	$\geq 1300 \text{ N}$	<b><math>\geq 1300 \text{ N}</math></b>
Resistance to Abrasion	ISO 10545-7	Declared Value	<b>Light: Class 4 Dark: Class 3</b>
Linear Thermal Expansion (50-400C)	ISO 10545-8	Declared Value	<b><math>\alpha \leq 9 \times 10^{-6} \text{ } ^\circ\text{C}^{-1}</math></b>
Thermal Shock resistance	ISO 10545-9	Required	<b>RESISTANT</b>
Crazing Resistance	ISO 10545-11	Required	<b>RESISTANT</b>
Frost Resistance	ISO 10545-12	Declared Value	<b>RESISTANT</b>
Scratch Hardness (MOHS Scale)	EN-101	-	<b>Hardness 6</b>

# Technical Details

Technical Features	Test Method	Required Values	Maison
<b>Chemical resistance</b>			
Resistance to household chemicals & swimming pool salts	ISO 10545-13	Minimum Class B	<b>CONFORMS</b>
Resistance to low concentration of acids and alkalis	ISO 10545-13	Declared Value	<b>CONFORMS</b>
Resistance to high concentrations of acids and alkalis	ISO 10545-13	Declared Value	<b>CONFORMS</b>
Resistance to Stains	ISO 10545-14	Minimum Class 3	-
Slip Resistance	DIN 51120	Declared Value	<b>N/A</b>
Light Resistance	ISO 10545-7	-	<b>CONFORMS</b>
Resistance to Fire	ISO 10545-14	Reaction to fire 96/603/CE	-

Size	Thickness (mm)	Pz/Box	Kg/Box	Mq/Box	Box/Pal	Kg/Pal	Mq/Pal
brick 250 x 60	9	50	14.7	0.75	84	1248	63
linear 250 x 125	9	26	13.4	0.81	81	1098	66



**Maison Latte Brick**  
**Maison Latte Linear**

**Maison Syrup Brick**  
**Maison Syrup Linear**





**Maison Ash Linear**  
**Maison Ash Brick**

**Maison Ember Linear**  
**Maison Ember Brick**





**Maison Blue Brick**  
**Maison Blue Linear**

**Maison Water Brick**  
**Maison Water Linear**





**Maison Evergreen Brick**  
**Maison Evergreen Linear**

**Maison Camel Brick**  
**Maison Camel Linear**







Maison Wine Linear & Brick





204 Duggins Lane, Tile Hill, Coventry,  
CV4 9GP  
02475 092 859  
[www.keystoneco.co.uk](http://www.keystoneco.co.uk)

